

NOTES

1. The underground utilities shown have been located from field survey information and existing drawings. This surveyor makes no guarantee that the underground utilities are as shown or that they are complete. The surveyor further does not warrant that the underground utilities shown are in the exact location indicated although he does certify that they are located as accurately as possible from information supplied and to the surveyor's best knowledge are approximately as shown. The surveyor has not physically located the underground utilities.
2. I have examined the Federal Emergency Management Agency Flood Insurance Rate Map for 1312(C)03566 Fulton County, Georgia and incorporated Areas, Panel 366 of 490, effective date June 22, 1989 and found a portion of the property shown herein to fall within a designated Flood Zone "X" (base flood elevation not determined).
3. The orthometric heights (elevations and contours) shown herein were determined by GPS observations and were adjusted by Planners and Engineers Collaborative in May 2008. North American Datum of 1983 (NAD83), North American Vertical Datum of 1988 (NAVD88), Georgia West Zone State Plane Coordinates.
4. The boundary was taken from an ALTA/ACSM Land Title Survey for Southeast Management & Development Corporation, by Boswell, Duke, Harper and Worthly, Inc., dated November 6, 2004, last revised November 28, 2005.
5. The spot elevations shown on the plot are taken on the pavement.

REFERENCES

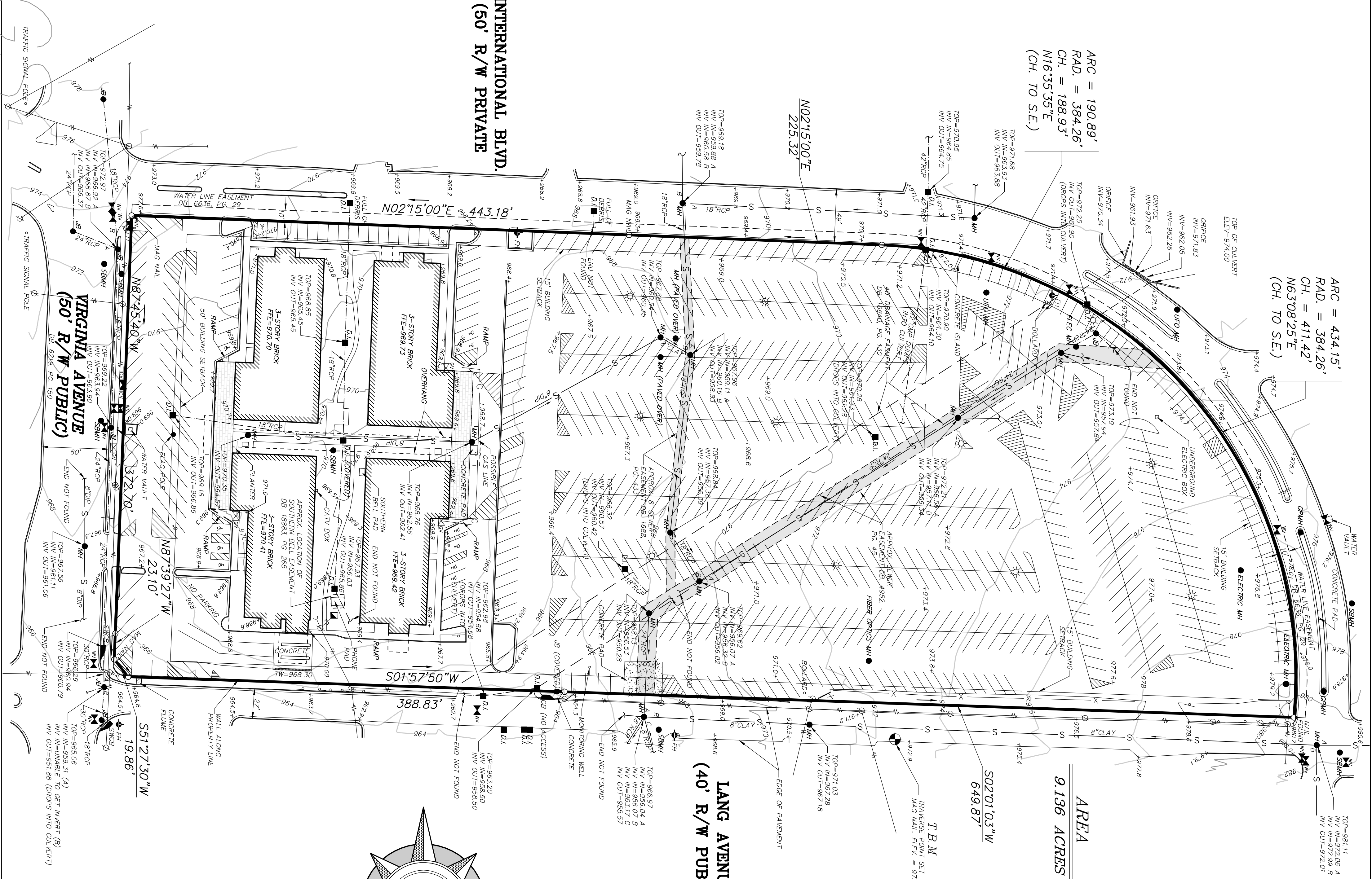
1. ALTA/ACSM Land Title Survey for Southeast Management & Development Corporation, by Boswell, Duke, Harper and Worthly, Inc., dated November 6, 2004, last revised November 28, 2005.

LEGEND

- R/R IRON PIPE FOUND (4" dia. iron unless noted otherwise)
- P/R IRON PIPE SET (4" dia. iron unless noted otherwise)
- O/R IRON PIPE FOUND (open top pipe)
- C/R IRON PIPE SET (concrete top pipe)
- P/M CONCRETE MOUNTED FOUND
- S/M SANITARY SEWER MANHOLE
- S/S STORM DRAINAGE LINE
- S/S STORM STORM & SAN. SEWER LINE
- C/B CATCH BASIN
- L/B LUNATION BOX
- M/2 MGR W/ILET
- M/2 MGR W/ILET
- C/2 CURB W/ILET
- C/2 CURB W/ILET
- P/P POWER POLE W/ OUI W/IRE
- P/P POWER POLE
- P/P OVERHEAD POWER / TELEPHONE LINE
- P/P GAS VALVE
- P/P WATER VALVE
- P/P WATER W/ILET
- P/P FRESH HYDRANT
- P/P WATER LINE
- P/P UNDERGROUND GAS LINE
- P/P UNDERGROUND ELECTRIC LINE
- P/P UNDERGROUND TELEPHONE LINE
- P/P UNDERGROUND CABLE LINE
- P/P LIGHT POLE
- P/P EXISTING TREE
- P/P CULTS PER AREZ
- P/P TOP OF WALL
- P/P BOTTOM OF WALL
- P/P WALL (TYP)
- P/P BRICKWORKER
- P/P ROOF
- P/P CONCRETE
- P/P SIGN
- P/P BACK OF CURB

The field data upon which this map or plot is based has a closure precision of one foot in 133,087 feet, per angle point and on angular error of 00' 00" 00" and was adjusted using the compass adjustment rule. This map or plot has been calculated for closure and is found to be accurate to within one foot in 288,964 feet.

EQUIPMENT USED:
ANGULARS: TOPCON GTS 223
LINEARS: TOPCON GTS 223



ARC = 434.15'
RAD. = 384.26'
CH. = 411.42'
N63°08'25"E
(CH. TO S.E.)

ARC = 190.89'
RAD. = 384.26'
CH. = 188.93'
N16°35'35"E
(CH. TO S.E.)

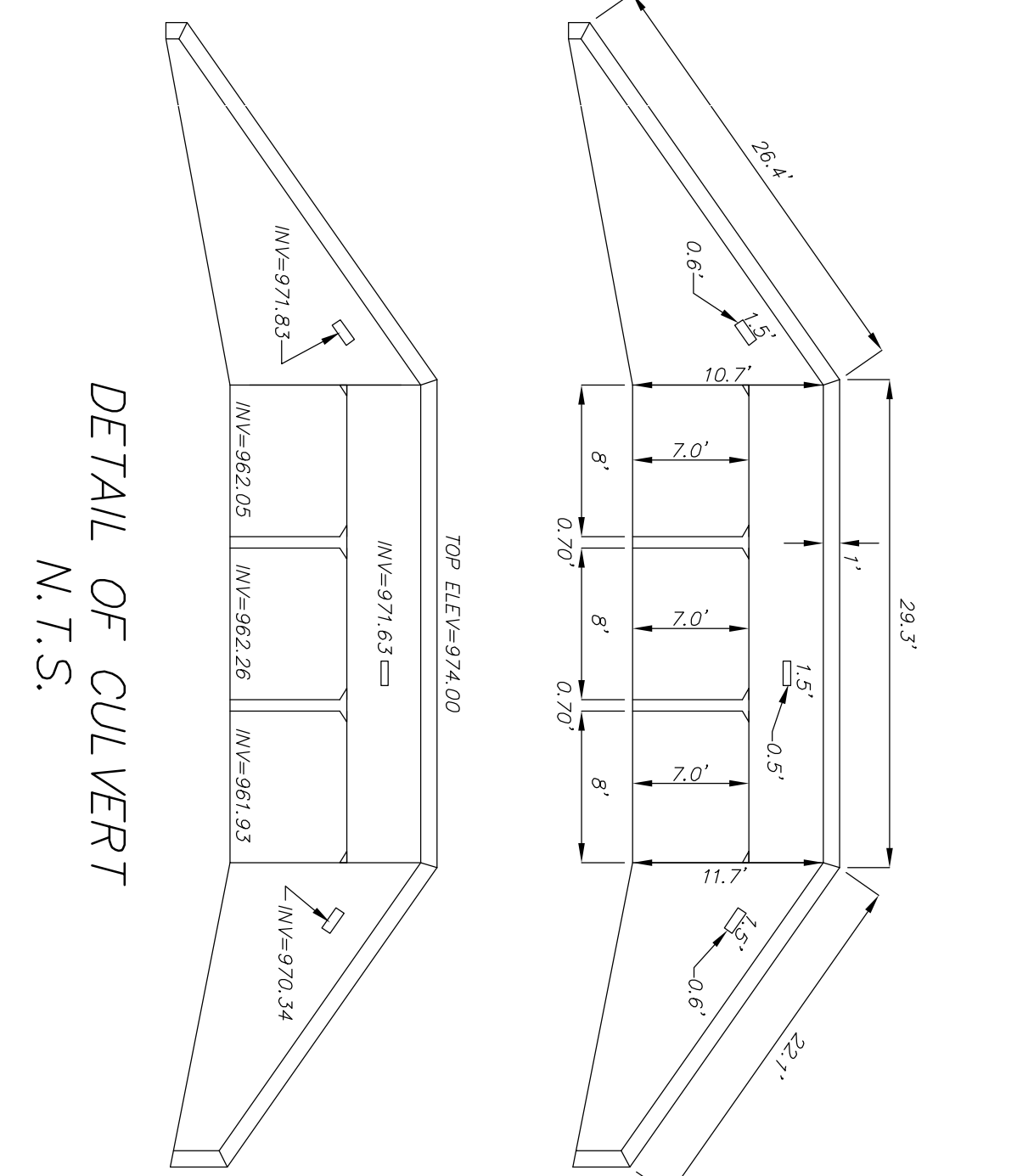
AREA
9.136 ACRES

S02°01'03"W
649.87'

LANG AVENUE
(40' R/W PUBLIC)

INTERNATIONAL BLVD.
(50' R/W PRIVATE)

VIRGINIA AVENUE
(50' R/W PUBLIC)



REV	DATE	DESCRIPTION	BY

GEORGETIA REGISTERED PROFESSIONAL SURVEYOR
No. 2489
WILLIAM H. KELLY, Jr., Ge. R.L.S. No. 2489

PLANNERS AND ENGINEERS COLLABORATIVE
"WE PROVIDE SOLUTIONS"
site planning - landscape architecture - civil engineering - land surveying
350 research court - norcross, georgia - 30092 - (770) 451-2741
www.peccol.com

FOR
KNIGHTSWOOD

LAND LOT(S) 127
DISTRICT 14th

FULTON COUNTY
GEORGIA

TOPOGRAPHIC SURVEY
DRAWN BY: MCS
CHECKED BY: WHK
FILE NO.: 97154.00
DATE: MAY 22, 2008
SCALE: 1"=50'